

CERTIFIED LAND CORNER RECORDATION

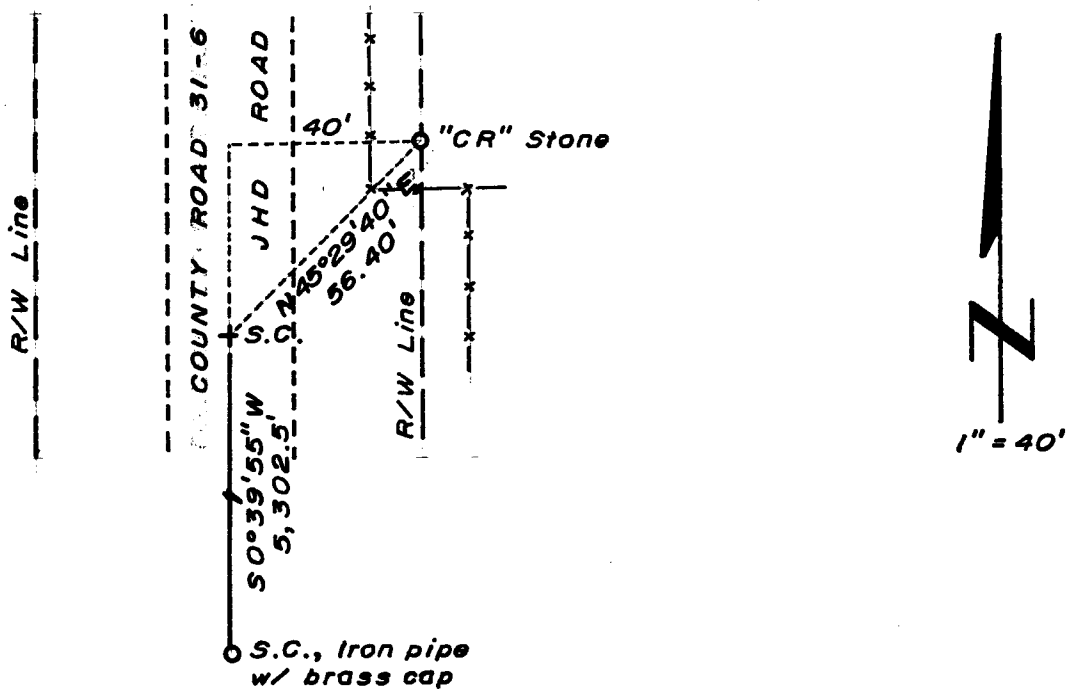
DESCRIPTION OF CORNER EVIDENCE FOUND, AND ORIGINAL RECORD (If known)

LOCATION Corner falls in graded road.
 S.19 S.20 Found a "CR" stone, set by County Surveyor, NE of corner position.
 S.30 S.29 Corner position re-established from "CR" stone.
 T.16N., R.65W.
 6th P.M.

DESCRIPTION OF MONUMENT AND ACCESSORIES ESTABLISHED TO PERPETUATE THE ORIGINAL LOCATION OF THIS CORNER:

At the corner: No monument set.
 Accessories: "CR" stone bears N 45°29'40" E, 56.40 feet distant.

SKETCH, WITH COURSE AND DISTANCE TO ADJACENT CORNER IF DETERMINED IN THIS SURVEY.
 (May Sketch or Paste Reproduction on Reverse Side.)



I, R.L. Hudson certify that I have carefully performed or reviewed the work done on the diagrammed corner as reported on this recordation form and approve the same.

R.L. Hudson Wyoming L.S. No. 519
 Signature of Surveyor Registration No.

STATE OF WYOMING,
 Office of Clerk and Recorder,
 County of Taramie

This "corner record" was filed for record on the 20 day of August, 1975, was noted on the cross-index plat and is assigned page No. _____, in book No. _____.

Janet C. Whitehead
 County Official

Cross Index No. <u>R-5</u>	T. <u>16</u>	R. <u>65</u>	Mer.
_____	T. _____	R. _____	Mer.
_____	T. _____	R. _____	Mer.
_____	T. _____	R. _____	Mer.
_____	T. _____	R. _____	Mer.
_____	T. _____	R. _____	Mer.
_____	T. _____	R. _____	Mer.

R-5 16-65

The State of Nevada }
County of Laramie } SS

This instrument was filed for record
at 210 o'clock P M. on the
20 day of August
A. D. 19 75 and duly recorded in
book _____ on page _____

Janet C. McDaniel

County Clerk & Ex-Officio Register of Deeds
By _____ Deputy